



Project data sheet and SEM teaser



Prepared by :

**Geology and Exploration
Department**



SEM

SOCIÉTÉ ÉQUATORIALE DES MINES

Table of contents

Mining and Exploration permits 4

SEM Mining Registry 5

♦ G9-519 Mebaga West Fe 6

♦ G9-520 Mebaga East Fe 6

Location : Mebaga West Fe 6

Local geology : Mebaga West Fe 7

Location : Mebaga East Fe 8

Local geology : Mebaga East Fe 9

About the license 10

Historical work 11

Prospects 12

♦ G9-434 Minvoul-East Au 13

Location 13

Local geology 14

About the license 15

♦ G9-479 Konossoville Au 16

Location 16

Local geology 17

About the license 18

♦ G2-723 Mbaniaka Au 19

Location 19

Local geology 20

About the license 21

♦ G4-424 Koumba Au 22

Location 22

Local geology 23

About the license 24

Exploration targets 25

♦ G9-400 Ekouk-Ville Au 26

Location 26

Local geology 27

About the license 28



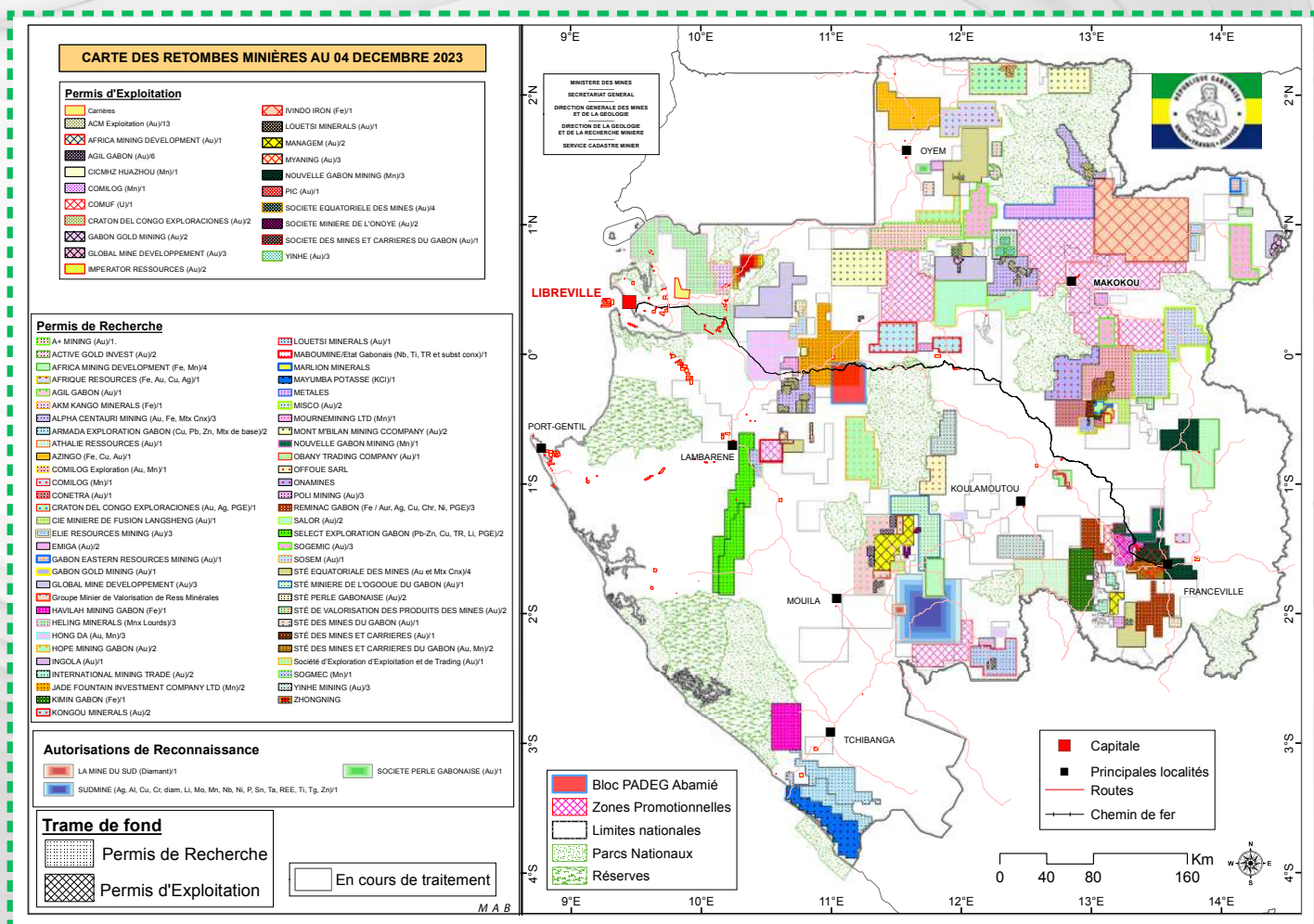


OLVO





Mining and Exploration permits



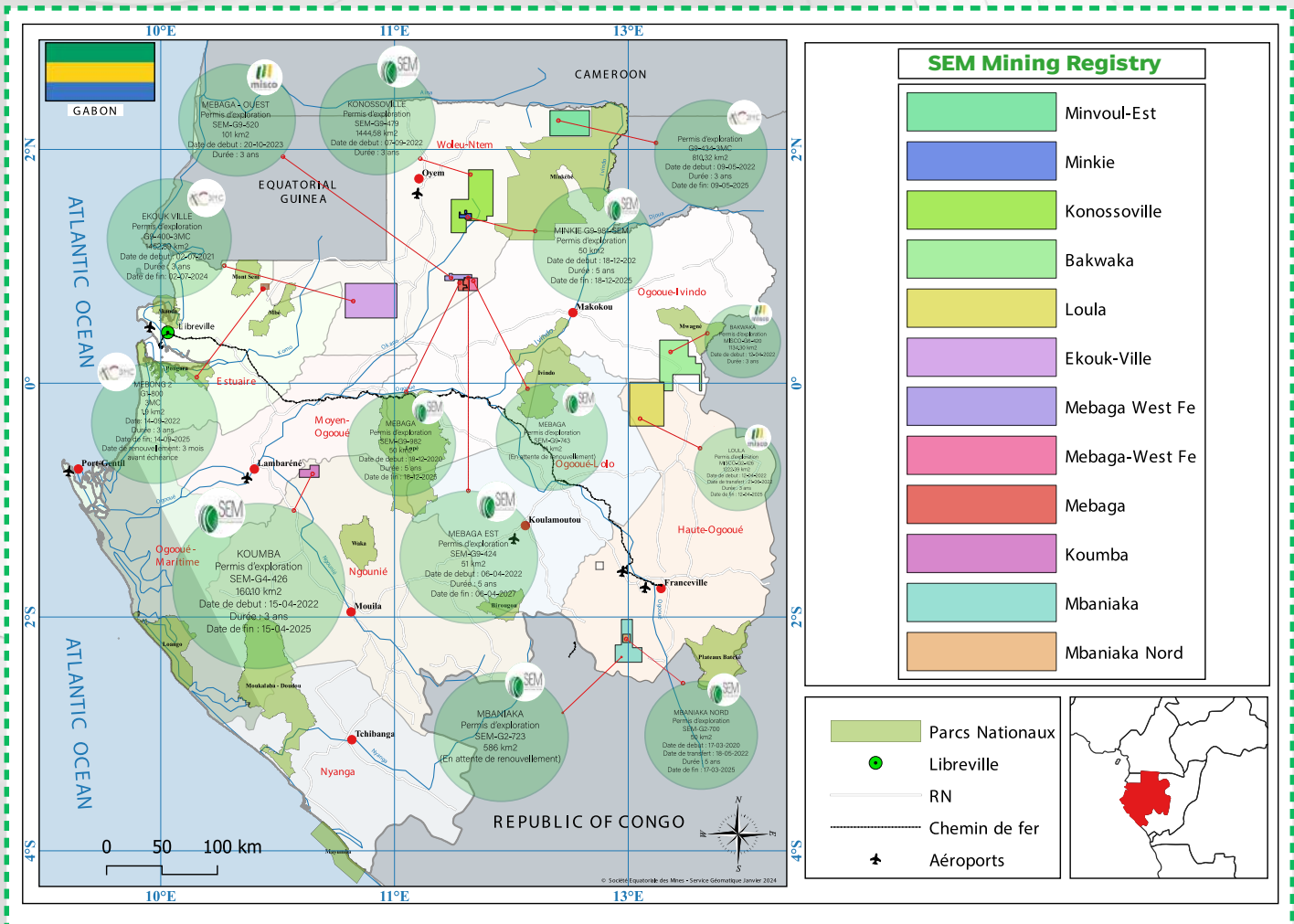


SEM Mining Registry

EXPLORATION LICENSE	LICENSE REFERENCE	HOLDER	SUBSTANCES	EXPIRY DATE	AREA
Bakwaka	G6-420	MISCO	Gold and associated minerals	11/04/2025	1 134.30 km ²
Ekouk-Ville	G9-400	3MC	Gold and associated minerals	02/07/2024	1 452.89 km ²
Konossoville	G9-479	SEM	Gold and associated minerals	07/09/2025	1444.58 km ²
Koumba	G4-429	SEM	Gold and associated minerals	14/04/2025	160.10 km ²
Loula	G2-426	MISCO	Gold and associated minerals	11/04/2025	1222.39 km ²
Mbaniaka	G2-723	SEM	Gold and associated minerals	Renewal in progress	678km ²
Mebaga East	G9-520	SEM	Gold and associated minerals	24/07/2026	99,42 km
Mebaga West	G9-519	MISCO	Iron and associated minerals	19/10/2026	100 km
Minvoul-East	G9-434	3MC	Gold and associated minerals	08/05/2025	810.32 km ²

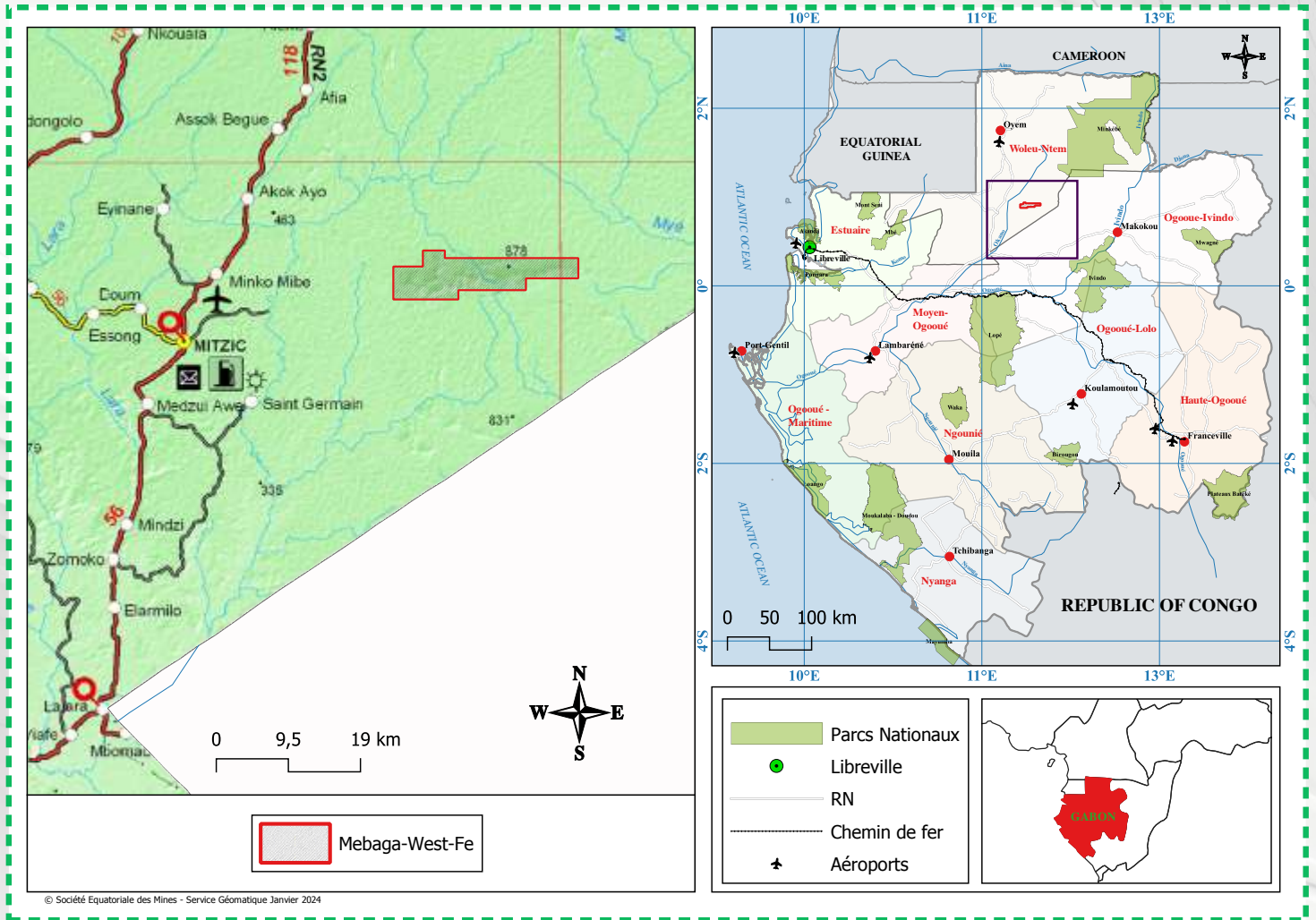
MINING LICENSE	LICENSE REFERENCE	HOLDER	SUBSTANCES	EXPIRY DATE	AREA
Minkié	G9-981	SEM	Gold and associated minerals	17/12/2025	50 km ²
Mebaga East	G9-424	SEM	Gold and associated minerals		
Mebaga	G9-982	SEM	Gold and associated minerals	17/12/2025	50 km ²
Mbaniaka	G2-700	SEM	Gold and associated minerals	17/05/2027	49,8 km ²

GRANITE MINING LICENSE	LICENSE REFERENCE	HOLDER	SUBSTANCES	EXPIRY DATE	AREA
Mebong	G1-800	SEM	Granite	13/09/2023	1,9 km ²



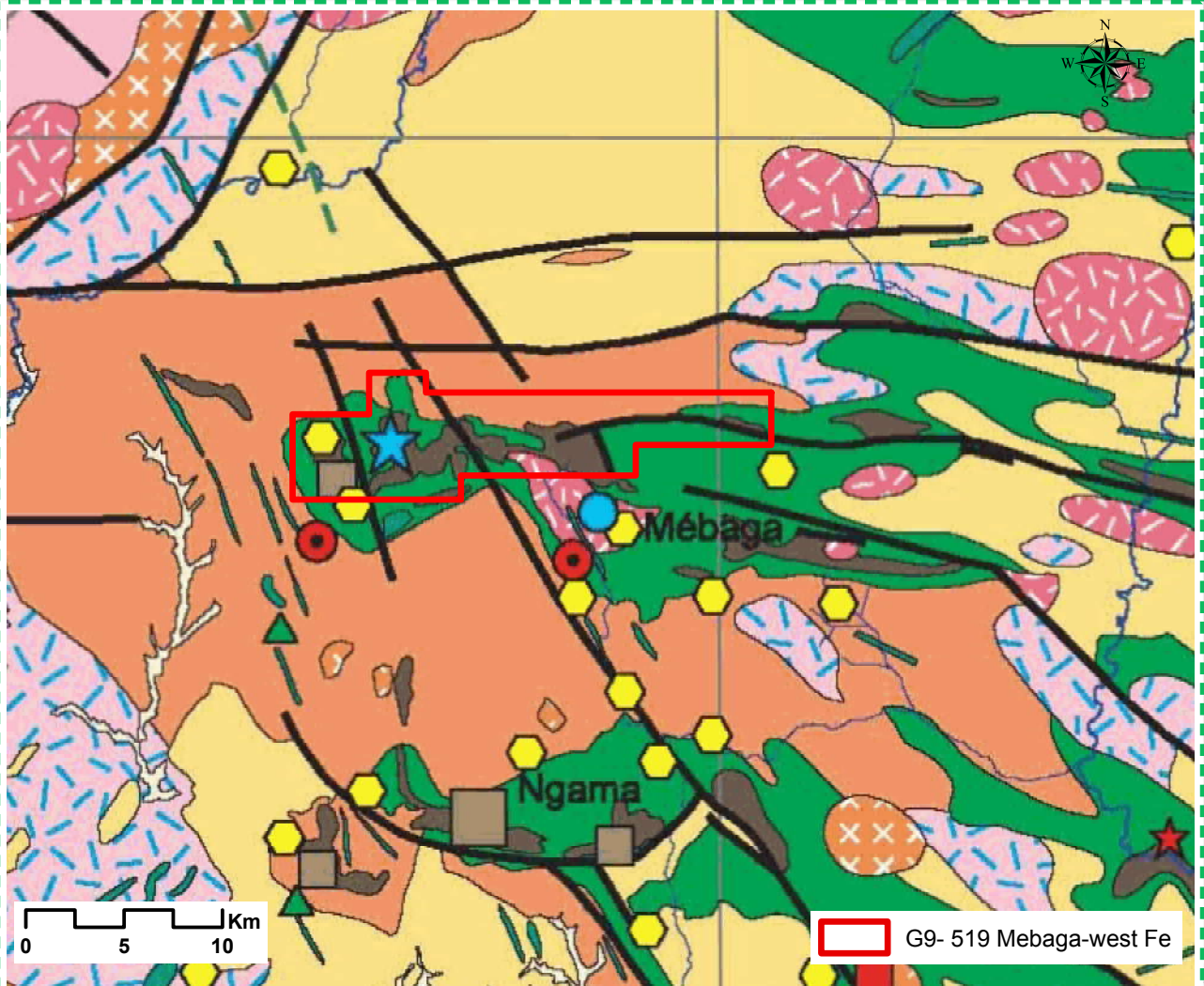
- ◆ G9-519 Mebaga West Fe
- ◆ G9-520 Mebaga East Fe

Location : Mebaga West Fe



◆ G9-519 Mebaga West Fe
 ◆ G9-520 Mebaga East Fe

Local geology : Mebaga West Fe



Orogène néoarchéen

Suite plutonique néoarchéenne (~ 2700 Ma)

- Tonalites, granodiorites ± rubanées, localement anatectiques
- Monzogranites granites à biotite

Domaines gneisso-migmatiques néoarchéens (~ 2750 Ma)

- Orthogneiss à ± grenat, fréquemment migmatique
- Gneiss dioritiques, gneiss amphiboliques
- Gneiss à biotite, leptynites

Méso - à Néoarchéen

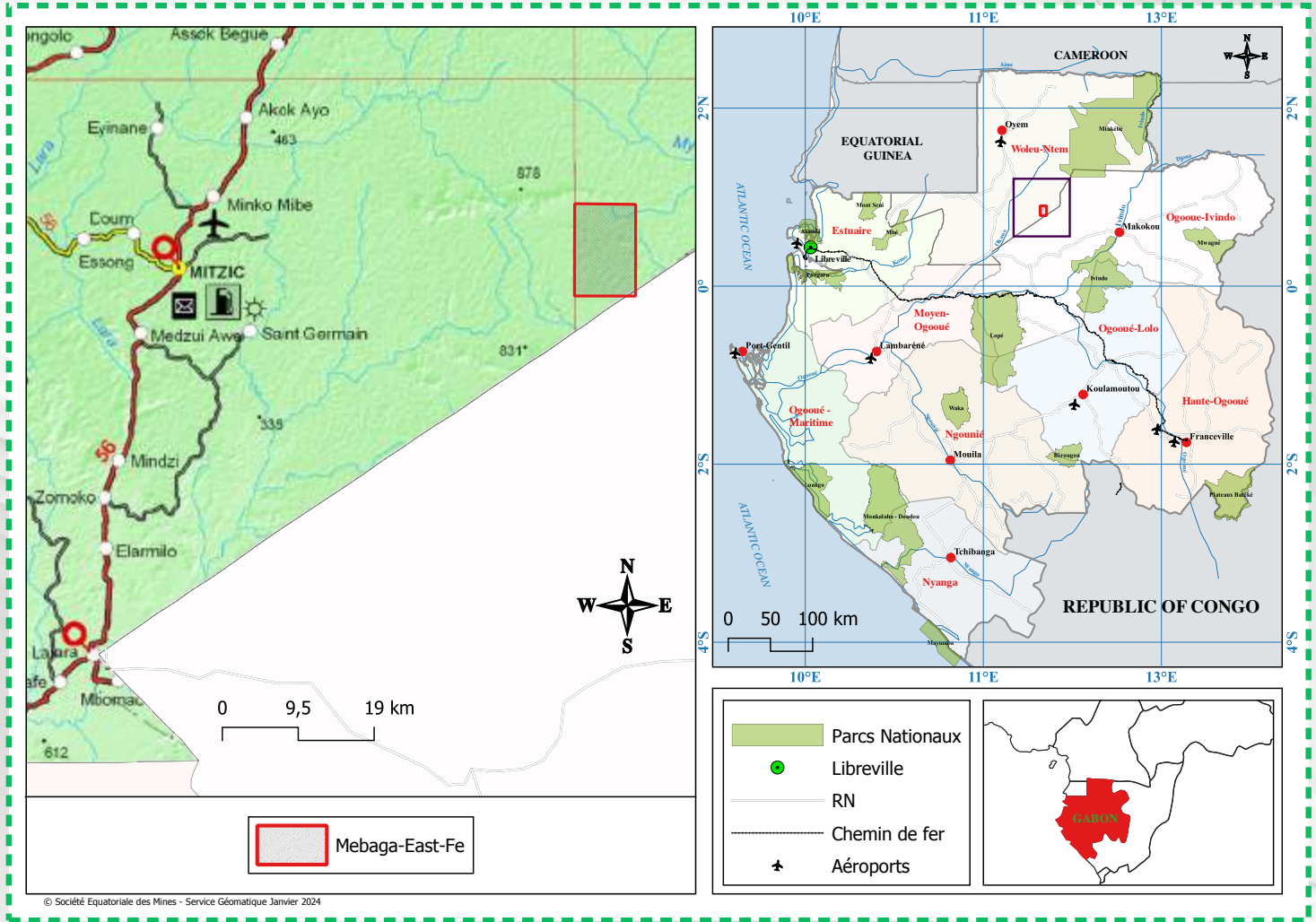
Sillons volvano-sédimentaires et ferrifères
Groupe de Bélinga (entre 2870 et 2750 Ma)

- Roches basiques, schistes, conglomérats, ultrabasites, paragneiss à ± grenate/ou clinopyroxène, leptynites à ± grenat
- BIF quartzites ferrugineux épi- à catazonaux

- Au
- Diam
- ★ Nb-Ta
- Ag
- Cr
- ▲ Fe

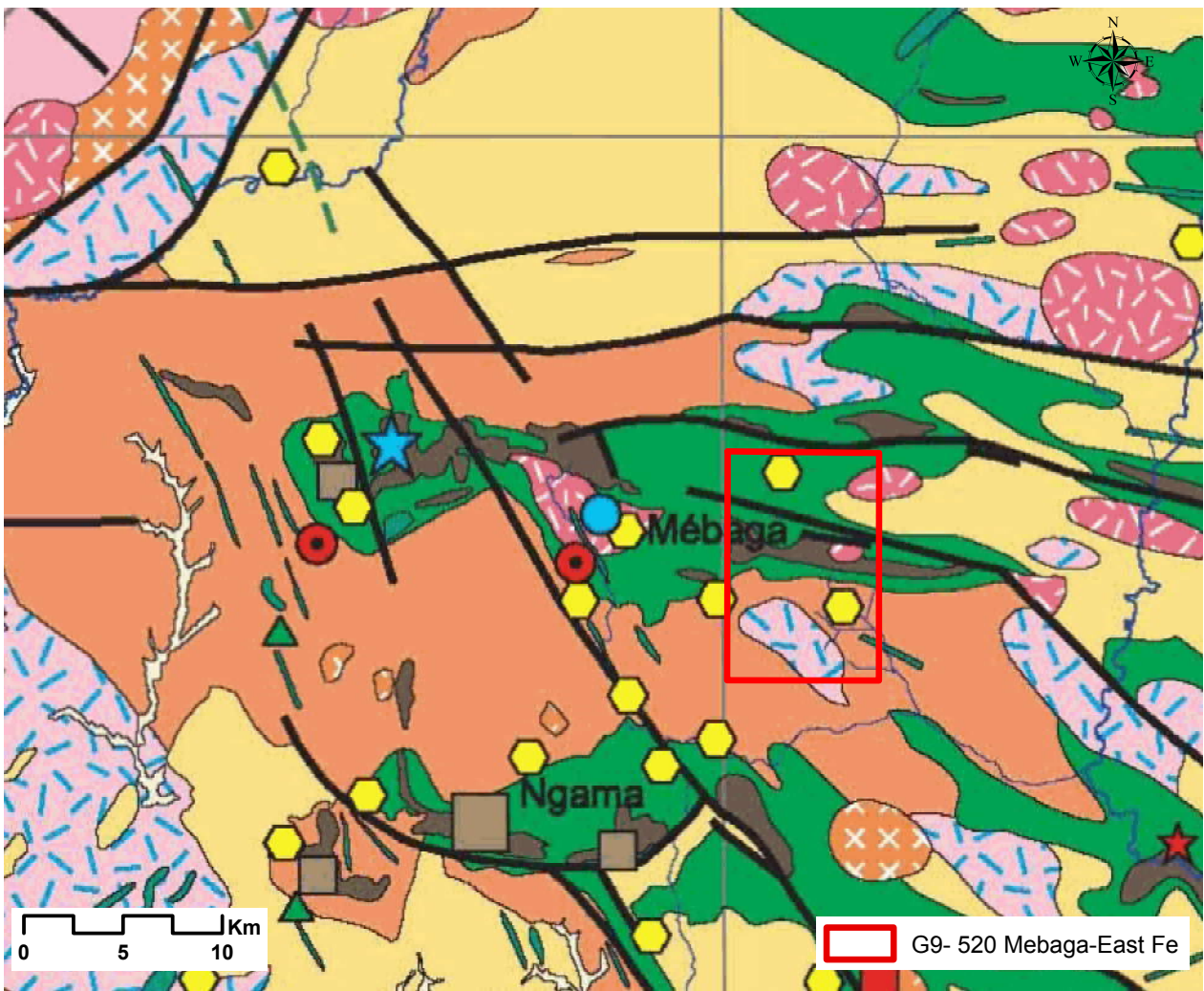
- ◆ G9-519 Mebaga West Fe
- ◆ G9-520 Mebaga East Fe

Location : Mebaga East Fe



- ◆ G9-519 Mebaga West Fe
- ◆ G9-520 Mebaga East Fe

Local geology : Mebaga East Fe



Orogène néoarchéen

Suite plutonique néoarchéenne (~ 2700 Ma)

- | | | |
|--------------------------------------------|-----------------------------------------------------------------------------------------------------------|------------------------------------------------------------------------------------------------------------------------------------------------------------------------------------------------------------------------------------------------------------------------------------------------------------------------------------------------------------------------------------------------------------------------------------------------------------------------------------|
| <p>Au
Diam
Nb-Ta
Ag
Cr</p> | <p>● (Yellow hexagon)
★ (Blue star)
● (Red circle)
● (Blue circle)
▲ (Green triangle)</p> | <ul style="list-style-type: none"> ■ (Pink) Tonalites, granodiorites ± rubanées, localement anatectiques ■ (Orange with dots) Monzogranites granites à biotite <p>Domaines gneisso-migmatiques néoarchéens (~ 2750 Ma)</p> <ul style="list-style-type: none"> ■ (Yellow) Orthogneiss à ± grenat, fréquemment migmatique ■ (Orange) Gneiss dioritiques, gneiss amphiboliques ■ (Brown) Gneiss à biotite, leptynites |
|--------------------------------------------|-----------------------------------------------------------------------------------------------------------|------------------------------------------------------------------------------------------------------------------------------------------------------------------------------------------------------------------------------------------------------------------------------------------------------------------------------------------------------------------------------------------------------------------------------------------------------------------------------------|

Méso - à Néoarchéen

Sillons volvano-sédimentaires et ferrifères
Groupe de Bélinga (entre 2870 et 2750 Ma)

- | | | |
|-----------|--------------------------------|------------------------------------------------------------------------------------------------------------------------------------------------------------------------------------------------------------------------------|
| <p>Fe</p> | <p>■ (Green)
■ (Brown)</p> | <ul style="list-style-type: none"> Roches basiques, schistes, conglomérats, ultrabasites, paragneiss à ± grenat/ou clinopyroxène, leptynites à ± grenat B/F quartzites ferrugineux épi- à catazonaux |
|-----------|--------------------------------|------------------------------------------------------------------------------------------------------------------------------------------------------------------------------------------------------------------------------|

◆ G9-519 Mebaga West Fe

◆ G9-520 Mebaga East Fe

About the license

◆ Location:

Northern Gabon
in the province of
Woleu-Ntem,
30km from Mitzic

◆ Geological formations:

North Gabon Craton;
Mesoarchean (3100-2810 Ma);
Neoproterozoic (2700 Ma)
associated with the Belinga
greenstone belts

◆ Total area:

**100 km² /
99,42 Km²**

◆ Exploration status:

Brownfield/Greenfield

◆ Available data:

Documentation
of alluvial production

◆ Lithological surrounding:

Green rocks, granite, gneiss,
schists, iron-bearing quartzite

◆ Type of deposits:

Algoma type

◆ Morphology of the deposit:

BIF crust, vein,
disseminated

◆ Potential geological resources:

90 Mt Fe @ 65% and 550 Mt
Fe potential to explore

◆ Potential critical substances:

REE, Nickel and Cobalt

◆ Development plan :

● 2024

Due diligence /
Desktop studies and
data compilation /
Geological and
structural mapping /
Pitting

2025

Geophysical acquisition,
drilling program and
resource estimation

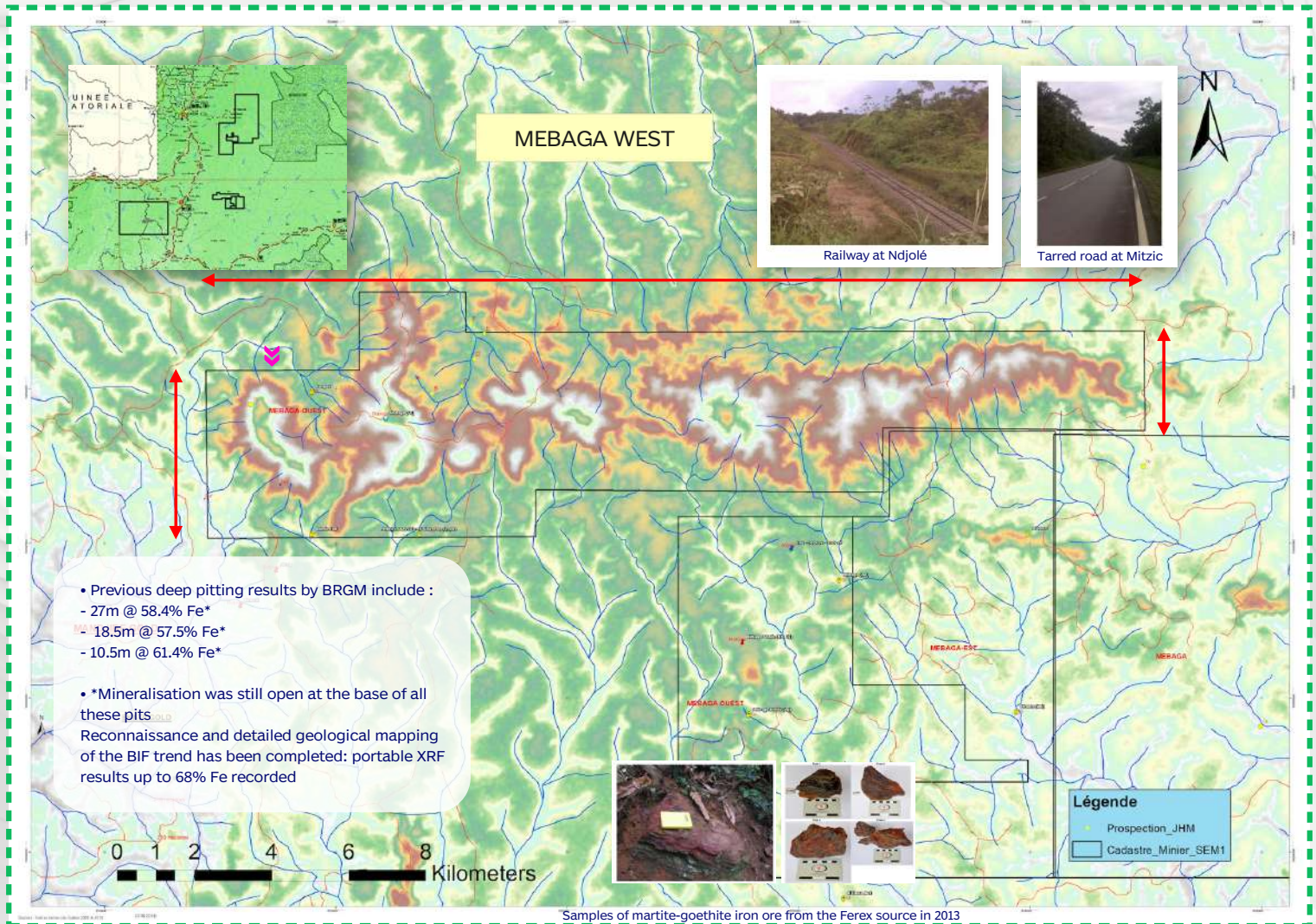
2026

Economic and pre-feasibility
studies



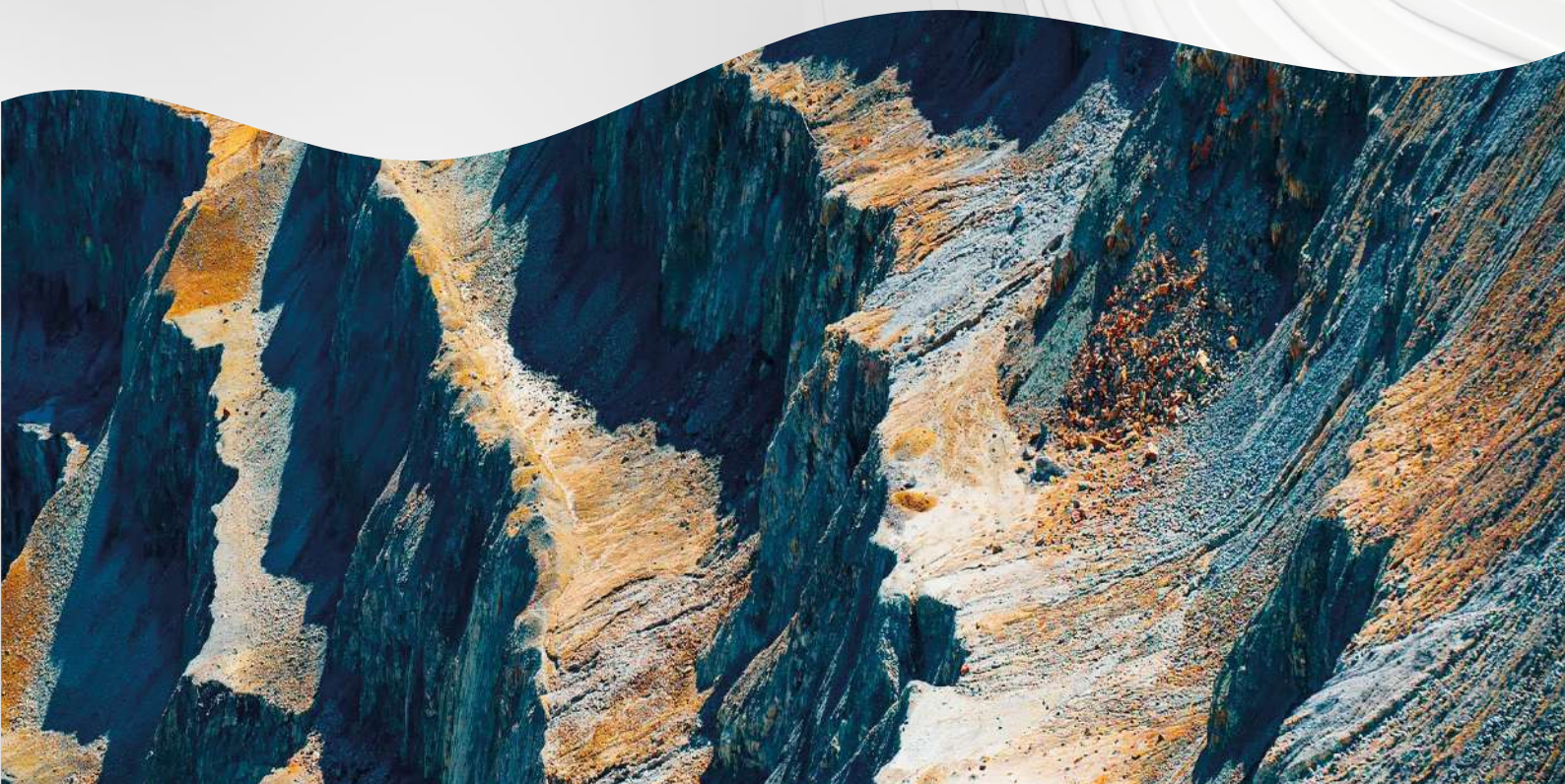
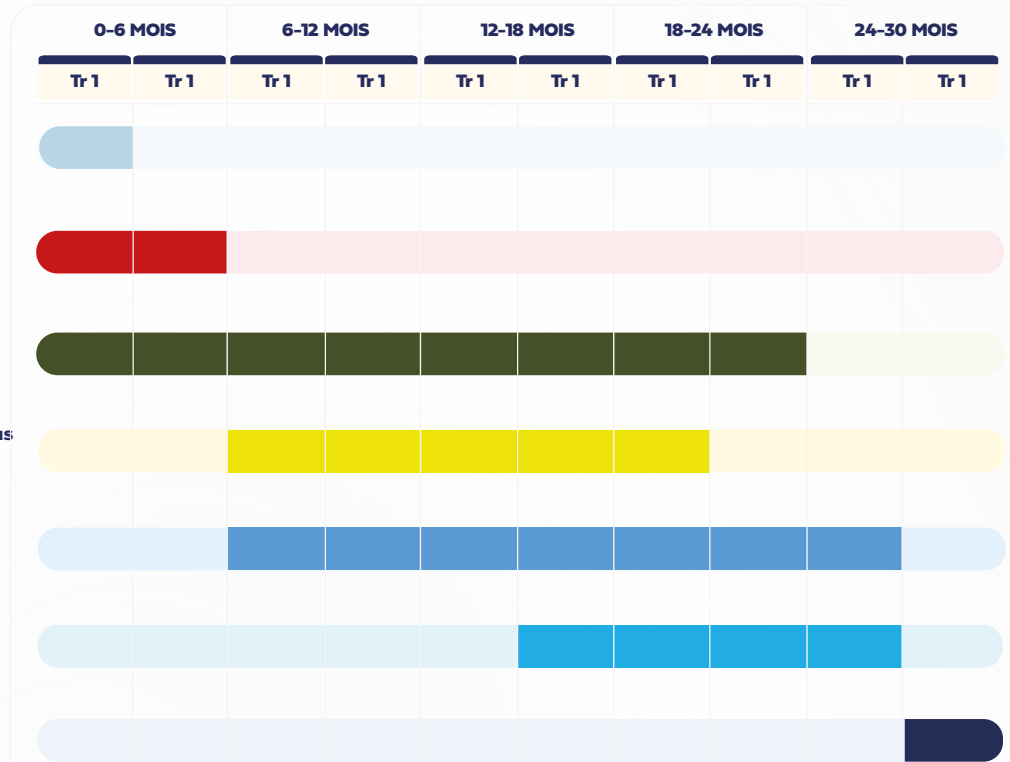


Historical work





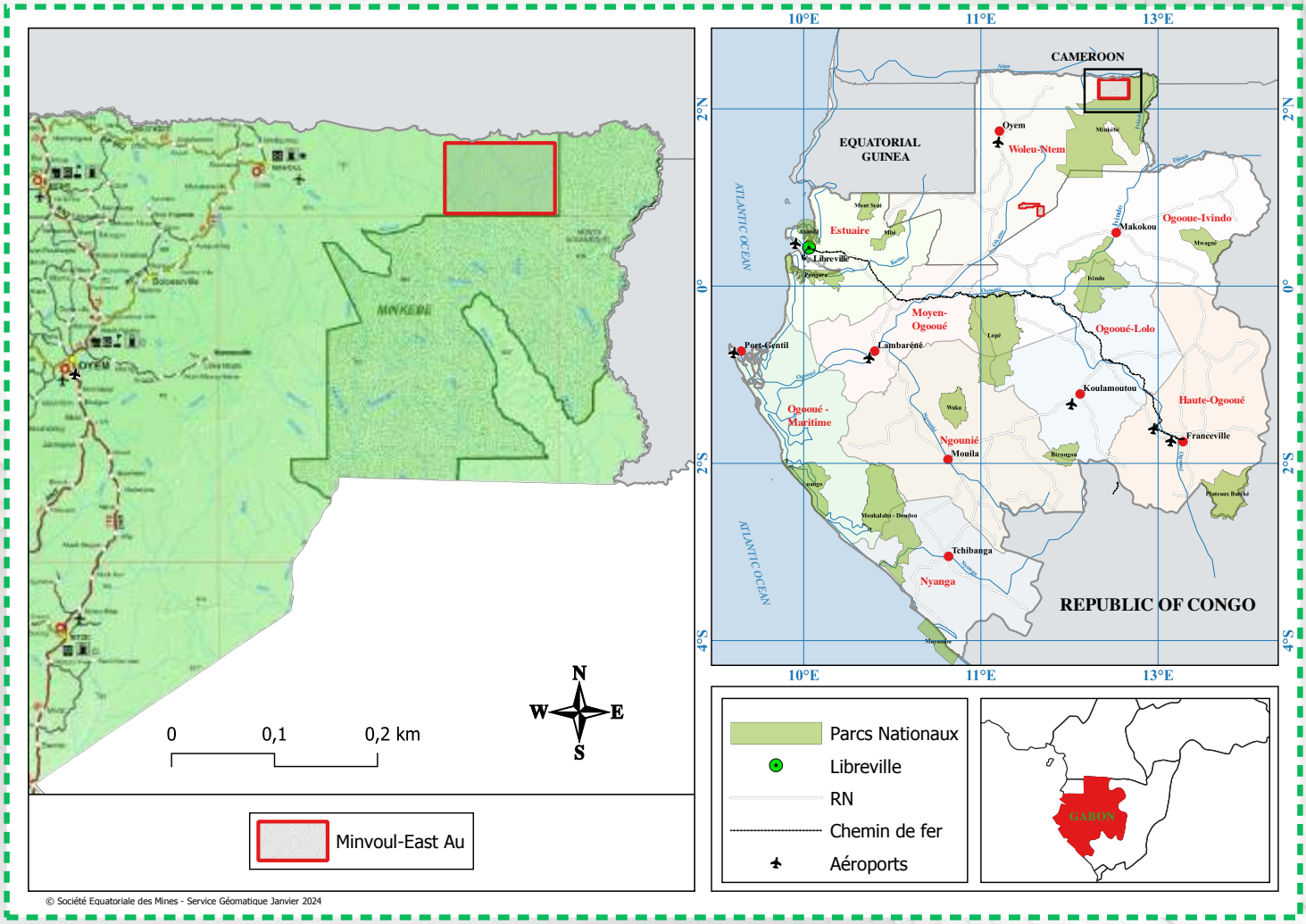
Prospects



◆ G9-434 Minvoul-East Au



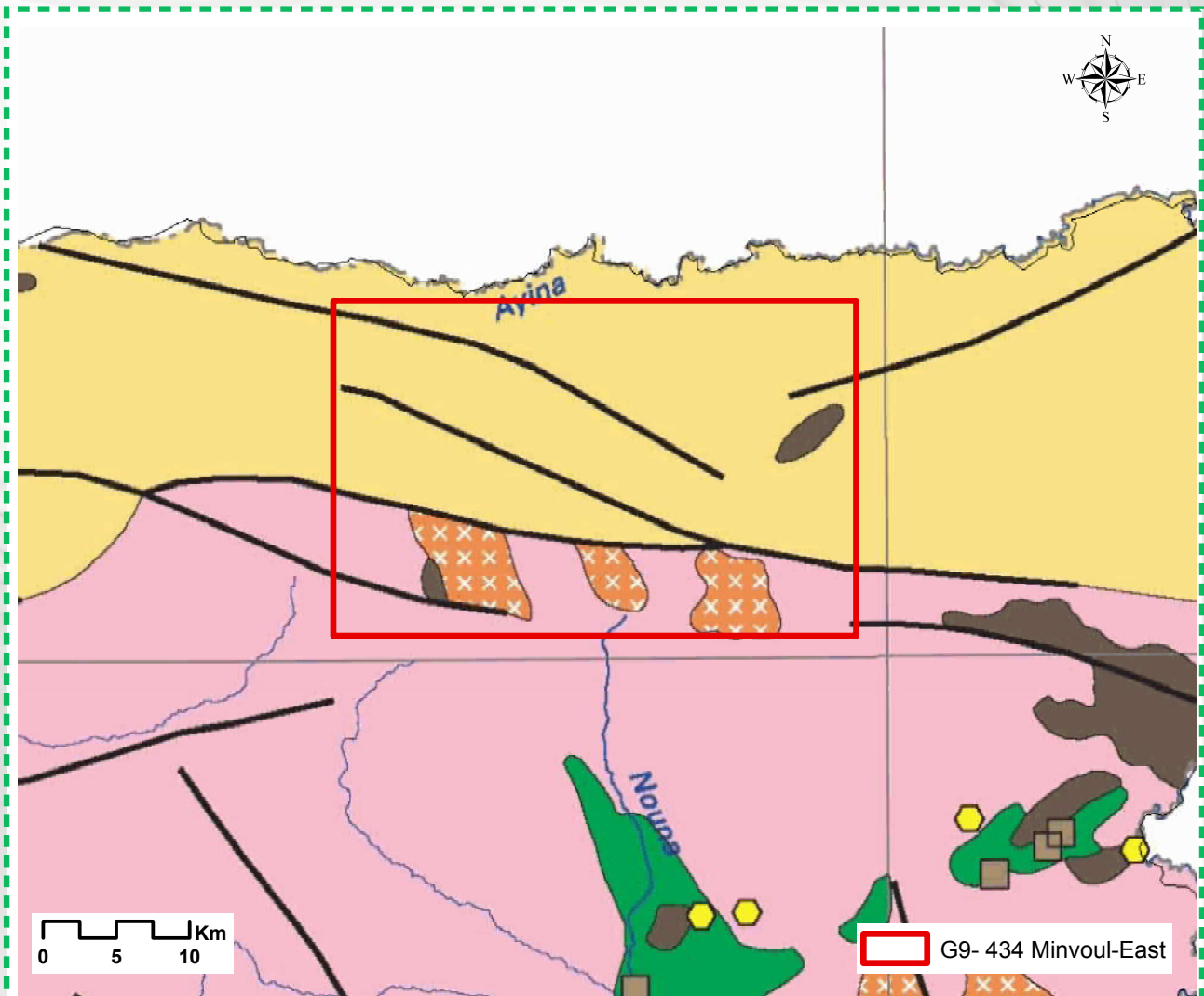
Location



◆ G9-434 Minvoul-East Au



Local geology



Orogène néoarchéen

Suite plutonique néoarchéenne (~ 2700 Ma)


Tonalites, granodiorites ± rubanées, localement anatectiques

Au  Monzogranites granites à biotite

Au Domaines gneisso-migmatiques néoarchéens (~ 2750 Ma)

 Orthogneiss à ± grenat, fréquemment migmatique


 Gneiss dioritiques, gneiss amphiboliques


 Gneiss à biotite, leptynites

Méso - à Néoarchéen

Sillons volvano-sédimentaires et ferrifères

Groupe de Bélinga (entre 2870 et 2750 Ma)

Fe  Roches basiques, schistes, conglomérats, ultrabasites, paragneiss à ± grenat/ou clinopyroxène, leptynites à ± grenat

 BIF quartzites ferrugineux épi- à catazonaux

◆ G9-434 Minvoul-East Au



About the license

◆ Location:

Northern Gabon in the province of **Woleu-Ntem**, 100 km from Minvoul

◆ Geological formations:

North Gabon Craton; Mesoarchean (3100-2810 Ma); Neoproterozoic (2700 Ma) associated with Greenstone belts of Belinga

◆ Total area:

810.32 km²

◆ Exploration status:

Greenfield

◆ Lithological surrounding:

Green rocks, granite, gneiss, schists, iron-bearing quartzite

◆ Type of deposits:

Primary, eluvial, laterite placers

◆ Morphology of the primary deposit:

crust, vein, disseminated discordant

◆ Potential geological resources:

15 t Au ;
and iron ore potential

◆ Potential critical substances:

Copper, REE, Niobium

◆ Development plan :

● 2024

Desktop studies and data compilation / Geological and structural mapping / Pitting

2025

Geophysical acquisition, drilling program and resource estimation

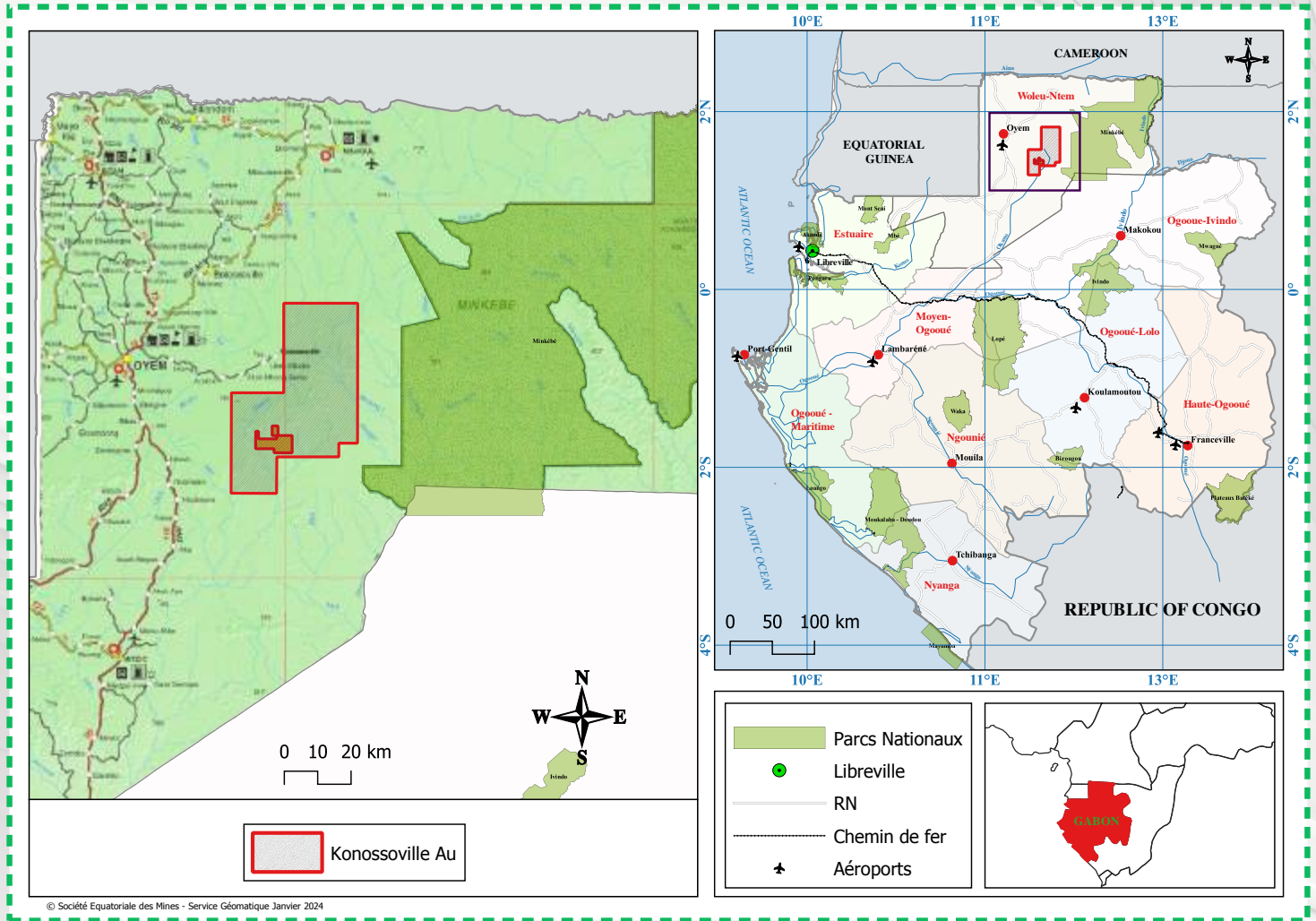
2026

Economic and pre-feasibility studies



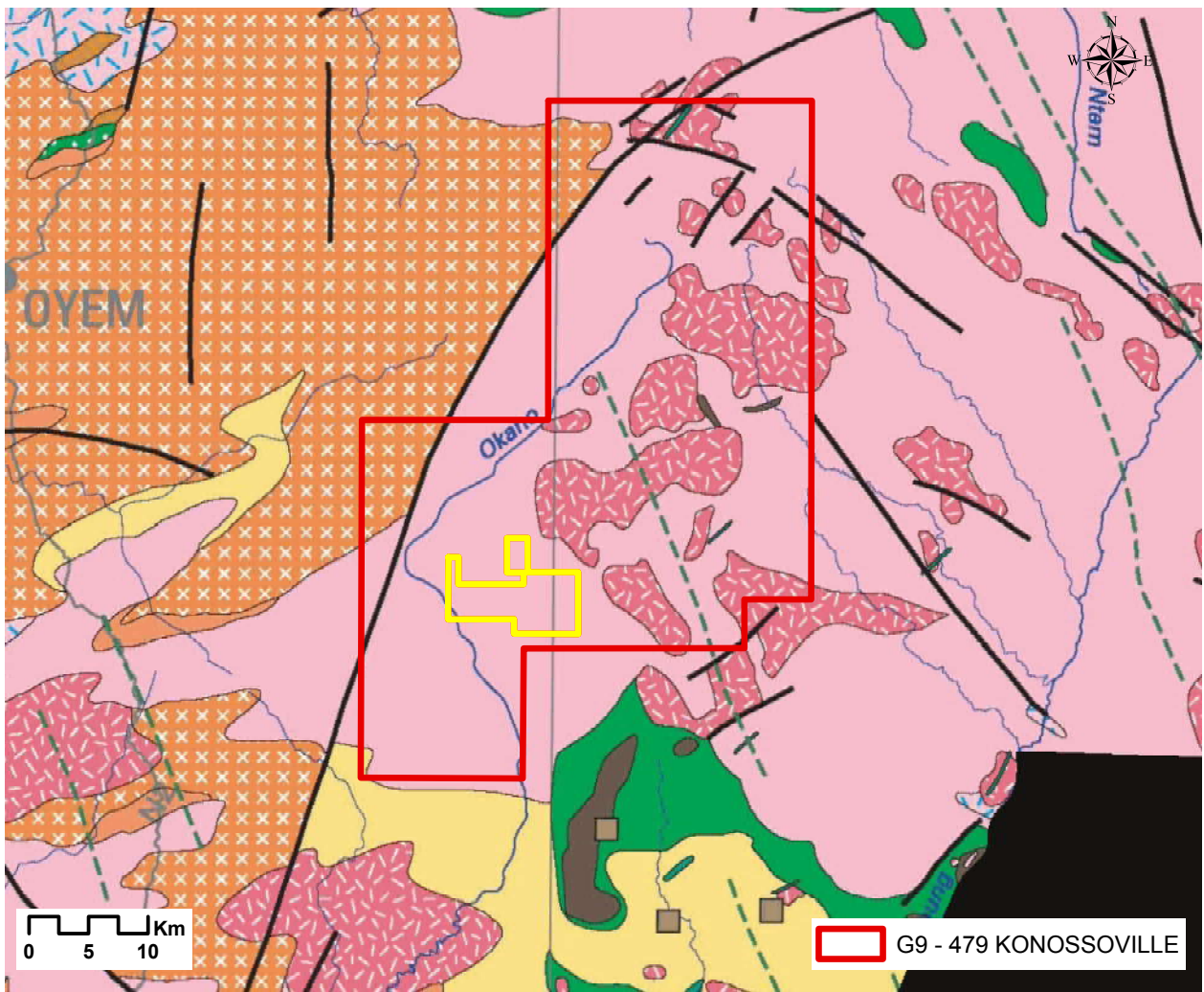
◆ G9-479 Konossoville Au

Location






◆ G9-479 Konossoville Au

Local geology






Orogène néoarchéen

Suite plutonique néoarchéenne (~ 2700 Ma)



-  Monzogranites porphyroïdes, syénites, granites alcalins
-  Monzogranites granites à biotite
-  Granodiorites, diorites









Domaines gneisso-migmatiques néoarchéens (~ 2750 Ma)

-  Orthogneiss à ± grenat, fréquemment migmatique
-  Gneiss dioritiques, gneiss amphiboliques
-  Gneiss à biotite, leptynites

Méso - à Néoarchéen

Sillons volvano-sédimentaires et ferrifères Groupe de Bélinga (entre 2870 et 2750 Ma)

-  Roches basiques, schistes, conglomérats, ultrabasites, paragneiss à ± grenat/ou clinopyroxène, leptynites à ± grenat
-  BIF quartzites ferrugineux épi- à catazonaux

- Au 
- Sn 
- Cu 
- Mo 
- Nb-Ta 
- REE 
- Th 
- Fe 

◆ G9-479 Konossoville Au



About the license

◆ Location:

Northern Gabon in the province of **Woleu-Ntem**, 650 km from Libreville

◆ Geological formations:

North Gabon Craton; Mesoarchean (3100-2810 Ma); Neoproterozoic (2700 Ma) associated with Greenstone belts of Belinga;

◆ Total area:

1444.4 km²

◆ Exploration status:

Greenfield

◆ Available data:

Documentation of alluvial production

◆ Lithological surrounding:

Green rocks, granite, gneiss, schists, iron-bearing quartzite

◆ Type of deposits:

Alluvial, laterite, potential for primary

◆ Morphology of the primary deposit :

crust, vein, disseminated discordant

◆ Potential geological resources:

40 t Au

◆ Potential critical substances:

Titanium, REE and PGE

◆ Development plan:

● 2024

Desktop studies and data compilation / Geological and structural mapping / Pitting

2025

Drilling and resource estimation

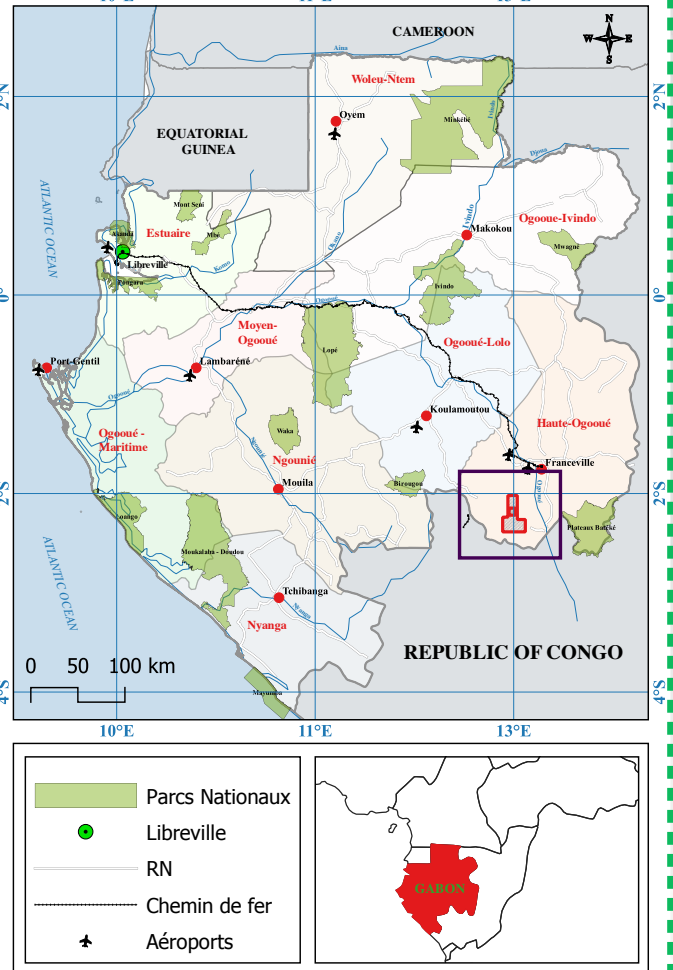
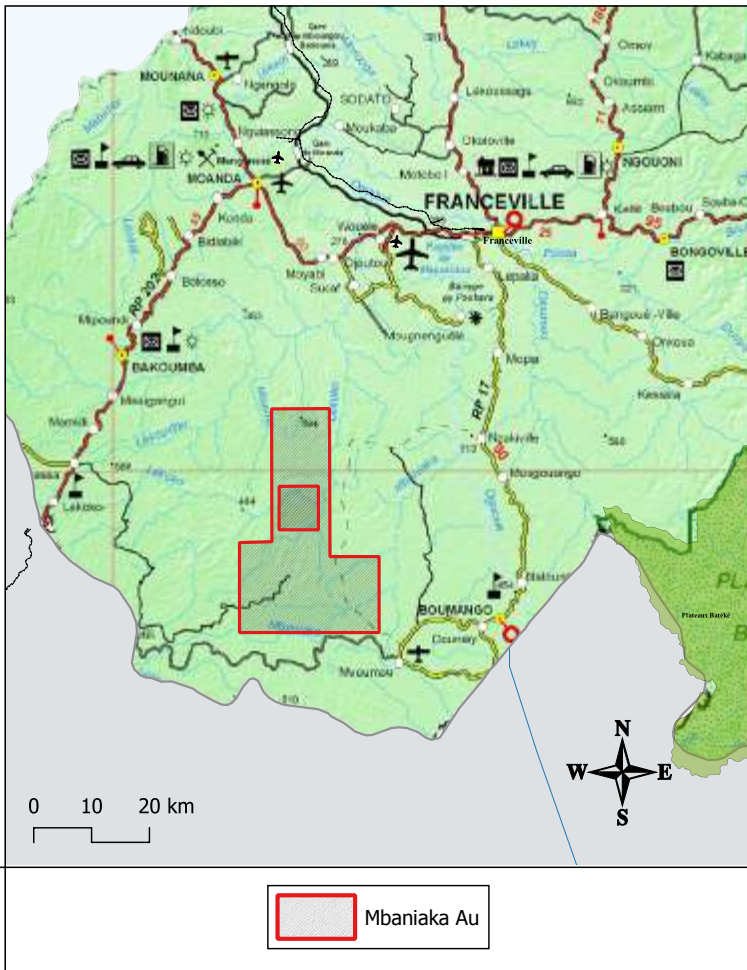
2026

Economic and pre-feasibility studies



◆ G2-723 « Mbaniaka Au »

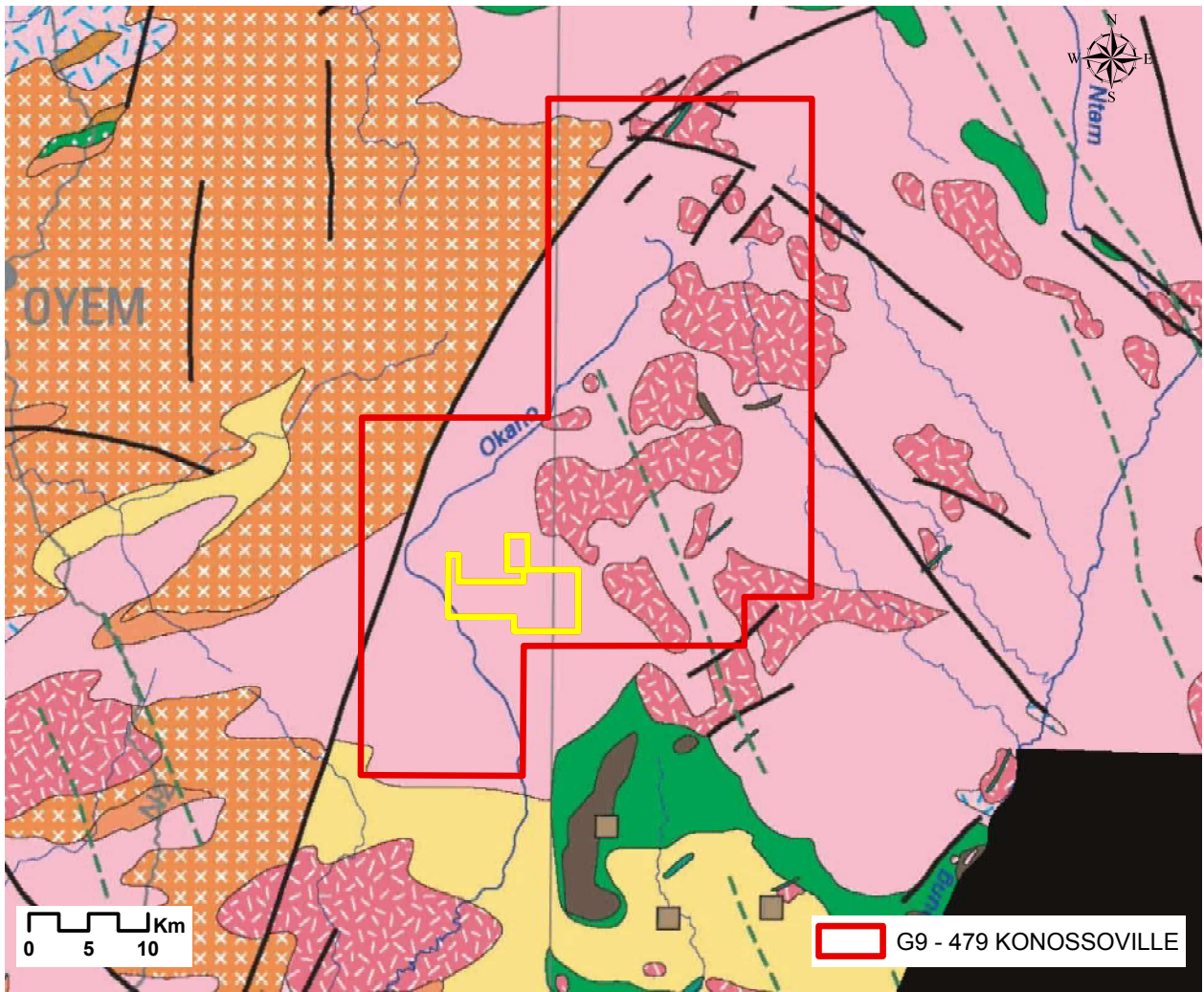
Location



© Société Equatoriale des Mines - Service Géomatique Janvier 2024




◆ G2-723 « Mbaniaka Au »

Local geology






Orogène néoarchéen

Suite plutonique néoarchéenne (~ 2700 Ma)



-  Monzogranites porphyroïdes, syénites, granites alcalins
-  Monzogranites granites à biotite
-  Granodiorites, diorites









Domaines gneisso-migmatiques néoarchéens (~ 2750 Ma)

-  Orthogneiss à ± grenat, fréquemment migmatique
-  Gneiss dioritiques, gneiss amphiboliques
-  Gneiss à biotite, leptynites

Méso - à Néoarchéen

Sillons volvano-sédimentaires et ferrifères Groupe de Bélinga (entre 2870 et 2750 Ma)

-  Roches basiques, schistes, conglomérats, ultrabasites, paragneiss à ± grenat/ou clinopyroxène, leptynites à ± grenat
-  BIF quartzites ferrugineux épi- à catazonaux

- Au 
- Sn 
- Cu 
- Mo 
- Nb-Ta 
- REE 
- Th 
- Fe 

◆ G2-723 Mbaniaka Au



About the license

◆ Location :

South East of Gabon
in the province of
Haut-Ogooué,
120 km from Franceville

◆ Geological formations:

Chaillu massif craton;
Mesoarchean (3100-2810 Ma);
Neoproterozoic (2700 Ma)
associated with the
Greenstone belts of Belinga;

◆ Total area:

575 km²

◆ Exploration status:

Brownfield

◆ Available data:

Soil geochemistry,
GRAV Mag airborne
geophysics, lidar
mapping and strategic
targets of polymetallic
geochemical anomalies;

◆ Lithological surrounding:

Green rocks, granite, gneiss,
schists, BIF

◆ Type of deposits:

Alluvial, eluvial and potential
for primary

◆ Morphology of the primary deposit:

Crust, vein

◆ Potential geological resources:

50 t Au

◆ Potential critical substances:

Copper and Nickel

◆ Development plan:

● 2024

Desktop studies and
data compilation /
Geological mapping and
tactical and strategic
prospecting

2025

Geophysical acquisition,
drilling program and
resource estimation

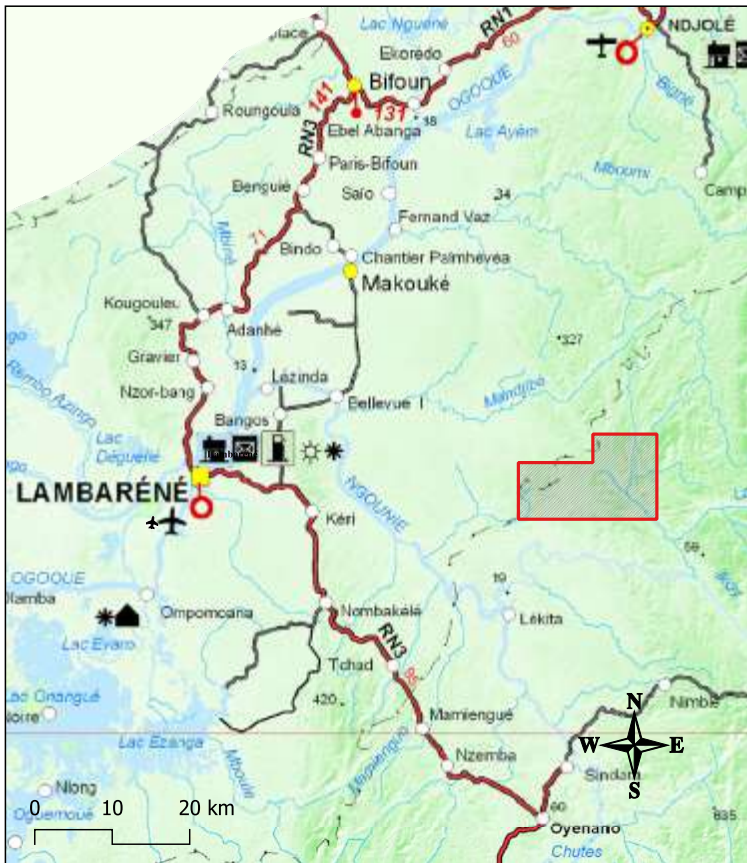
2026

Economic and
pre-feasibility studies

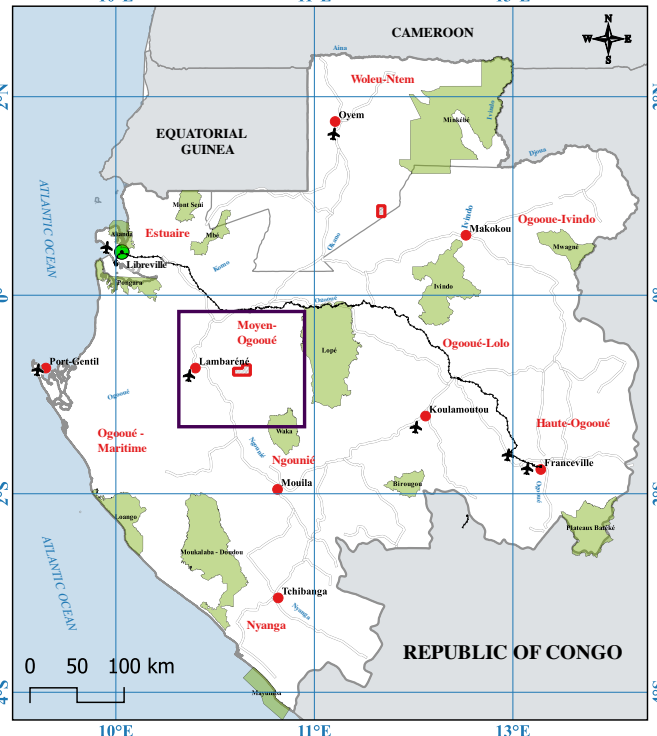
◆ G4-424 Koumba Au








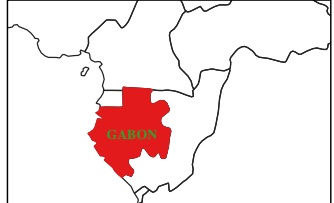
Location



 Koumba Au



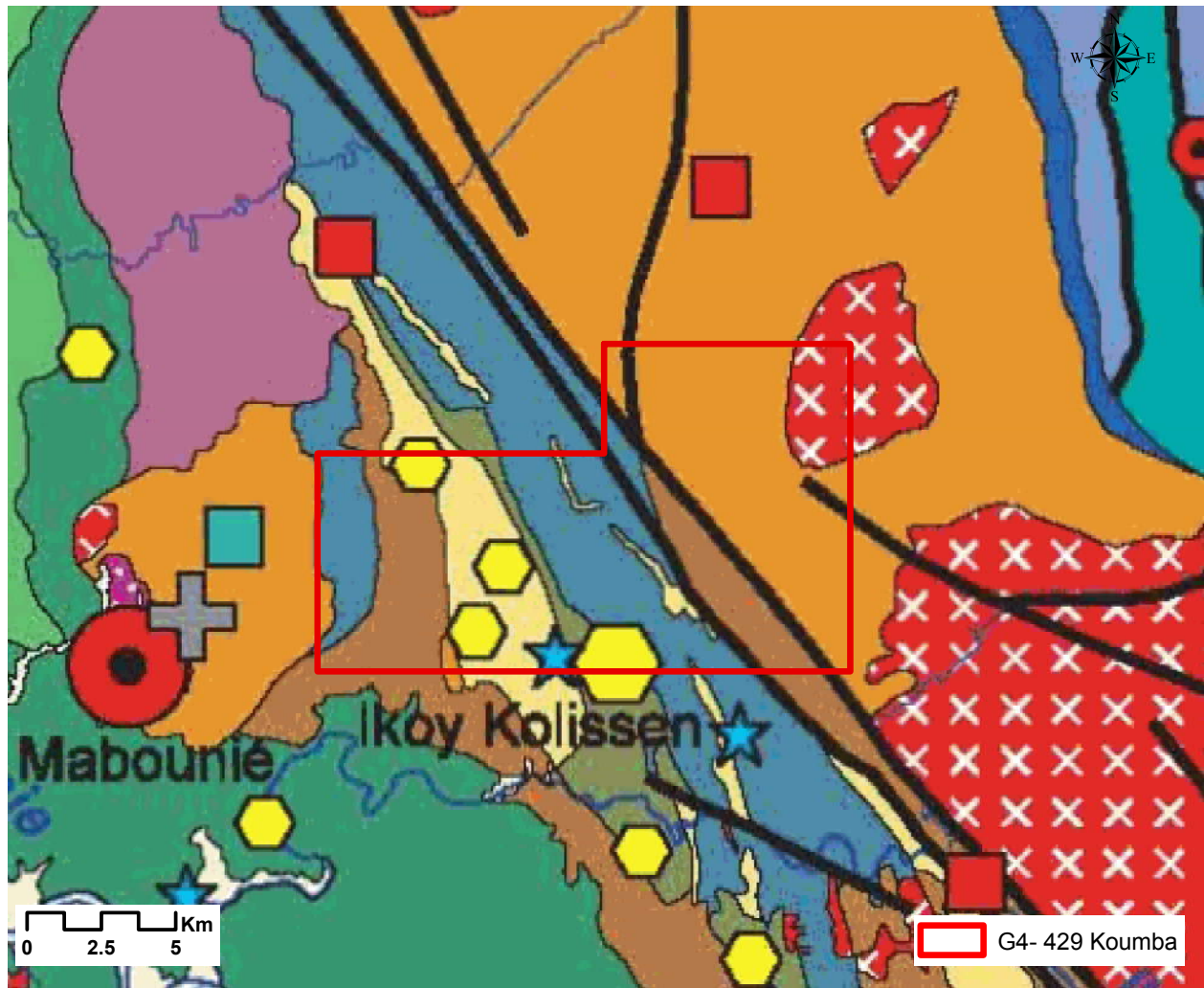
	Parcs Nationaux
	Libreville
	RN
	Chemin de fer
	Aéroports



◆ G4-424 Koumba Au





Local geology








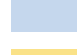


 G4- 429 Koumba

Orogène éburnéen

Ceinture plutonique éburnéenne

Au   Complexe éburnéen (~ 2080 - 1980 Ma) : granites, granites leucocrates, granites porphyroïdes, granodiorites, tonalites

Bassins syn-orogéniques

- | | | |
|--------------------------------------------------------------------------------------------------|-------------------------------------------------------------------------------------------------|---------------------------------------------------------------------------------------------------------------------------------------------------------------------------------------------------------------|
| Phos  | Sn  |  Groupe ce N'Djolé (<2118 ± 10 Ma) : métavolcanites, métaquartzites |
| Nb-Ta  | Diam  |  Groupe ce N'Djolé (<2118 ± 10 Ma) : schistes, schistes ampéliques, métagrès |
| | |  Complexe de Kolissen (<2017 ± 12 Ma) : métavolcanites, métaquartzites |
| | |  Complexe de Kolissen (<2017 ± 12 Ma) : micaschistes, paragneiss métaquartzites, métaconglomérats, métasédiments épizonaux |

◆ G4-424 Koumba Au



About the license

◆ Location:

East Central Gabon
in the province of
Ngounié, 90 km from
Lambaréné;

◆ Geological formations:

Paleoproterozoic
(2050-1950 Ma) Eburnean
complex; Archean (2750 Ma)
associated with Greenstone
belts of Belinga;

◆ Total area:

160 km²

◆ Exploration status:

Brownfield

◆ Available data:

Mapping of local geology,
Lidar mapping, soil
geochemistry, auger
campaign, GRAV Mag
airborne geophysics,
results of core drilling
campaigns, strategic
targets of gold geochemical
anomalies

◆ Lithological surrounding:

Amphibolite, black shales,
carbonatic rocks

◆ Type of deposits:

Primary, alluvial

◆ Morphology of the primary deposit:

Discordant vein and
disseminated

◆ Potential geological resources:

30 t Au

◆ Potential critical substances:

PGE, REE, Copper,
Cobalt and Nickel

◆ Development plan:

● **2024**

Due diligence / Data
compilation / Geological
and structural mapping /
Geochemical sampling

2025

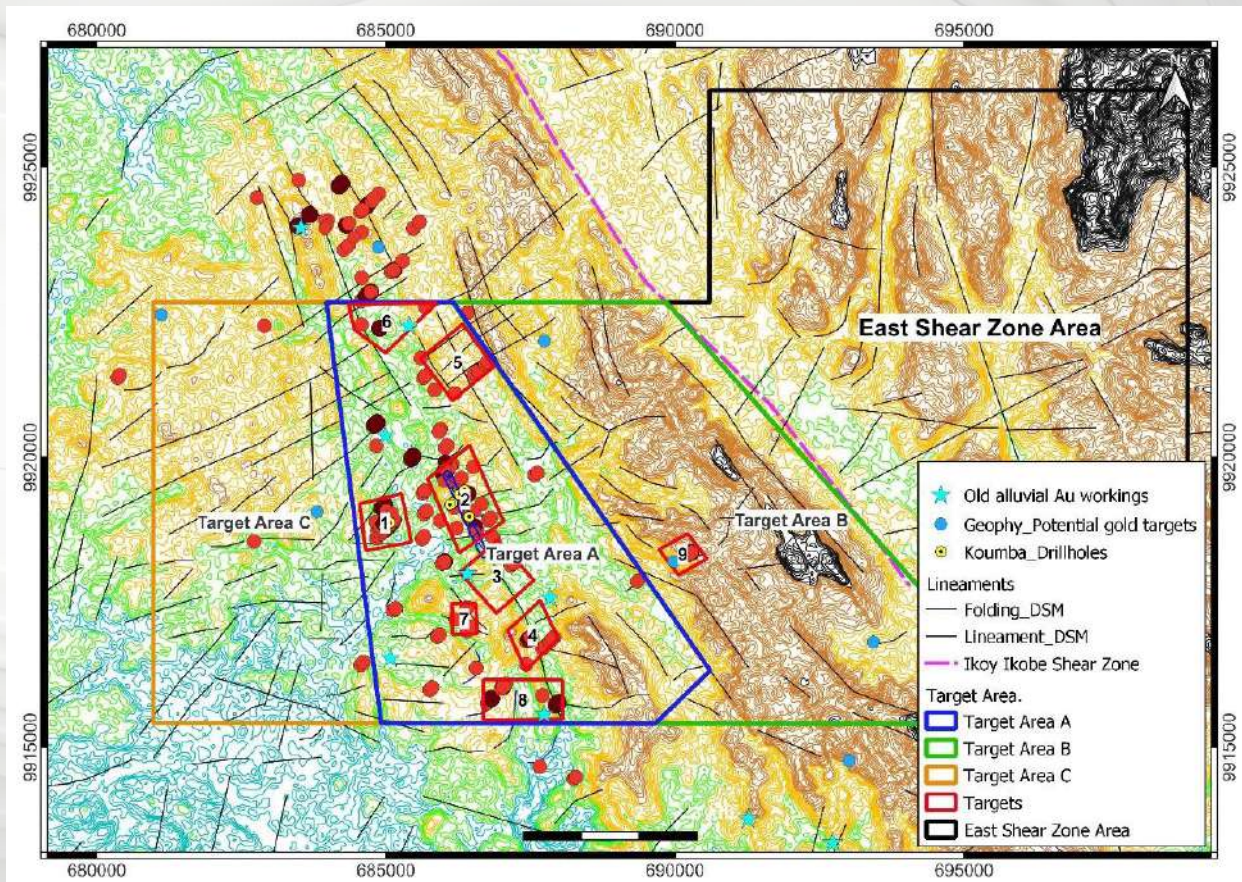
Auger drilling, diamond
drilling, pitting and trenching

2026

Resource estimation



Exploration targets

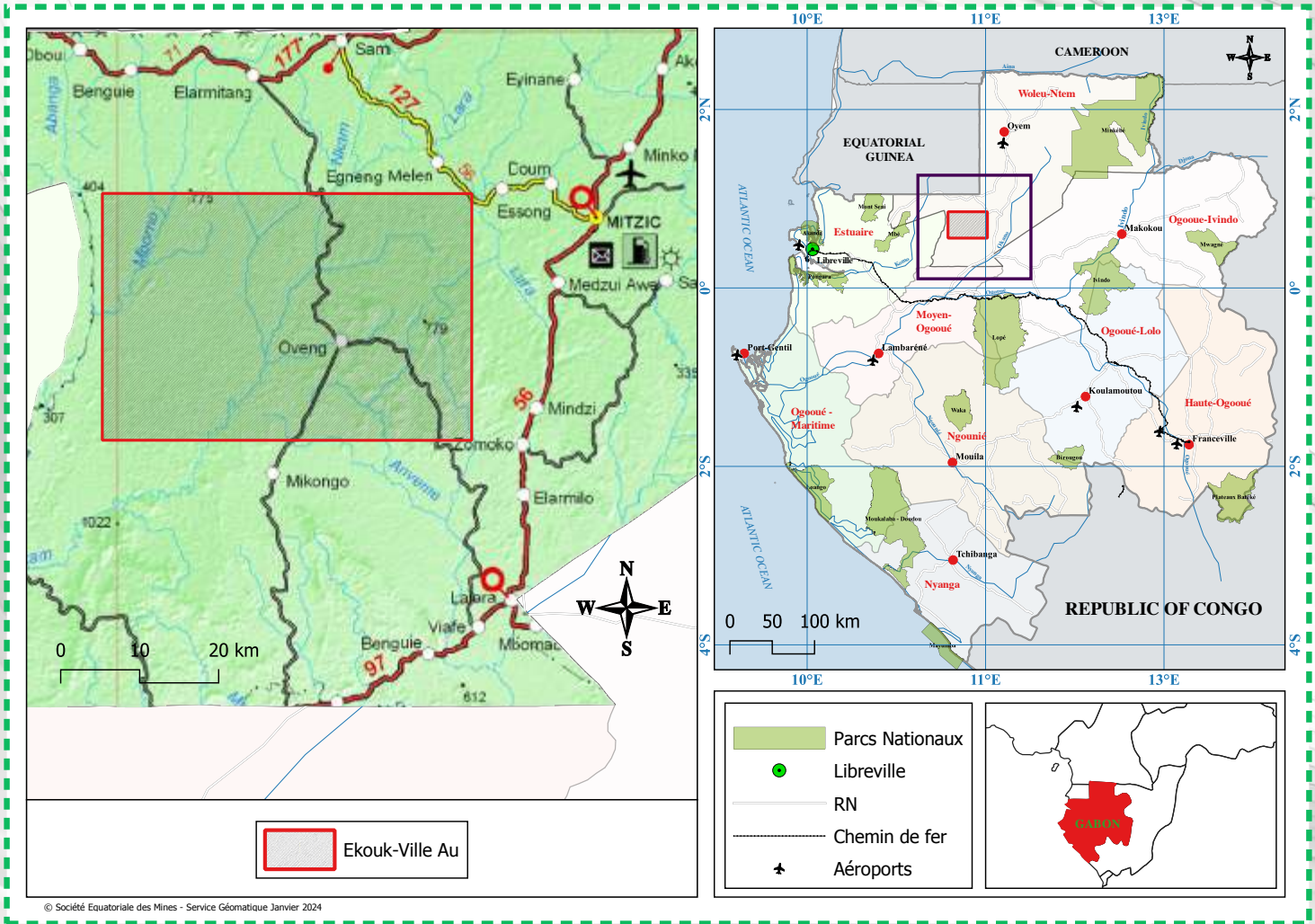


Priority	Target	Size	Comment
Priority 1 (P1)	Target 1	0.6 km ²	Hard rock intercept in drill hole, deep structural lineaments and Target 2 hosts the Mainou quartz vein.
	Target 2	1.3 km ²	
Priority 2 (P2)	Target 3	0.8 km ²	Targets along strike of P1, that also contain multiple anomalous Au soil samples but do not have any historical drilling information
	Target 4	0.5 km ²	
Priority 3 (P3)	Target 5	0.8 km ²	the following priority is given to the targets that have similar geological settings and style to P1 and P2 and also have deep structural lineaments
	Target 6		
	Target 7		
	Target 8		
Priority 4 (P4)	Target 9		Geophysical interpretation, old alluvial gold working, and anomalous Au - soil samples, deep structural lineaments
Priority 5 (P5)	East Shear Zone Area		Data poor area. Once more data is available, re-prioritisation is possible.

Table: Priority and objectives for the Koumba gold licence

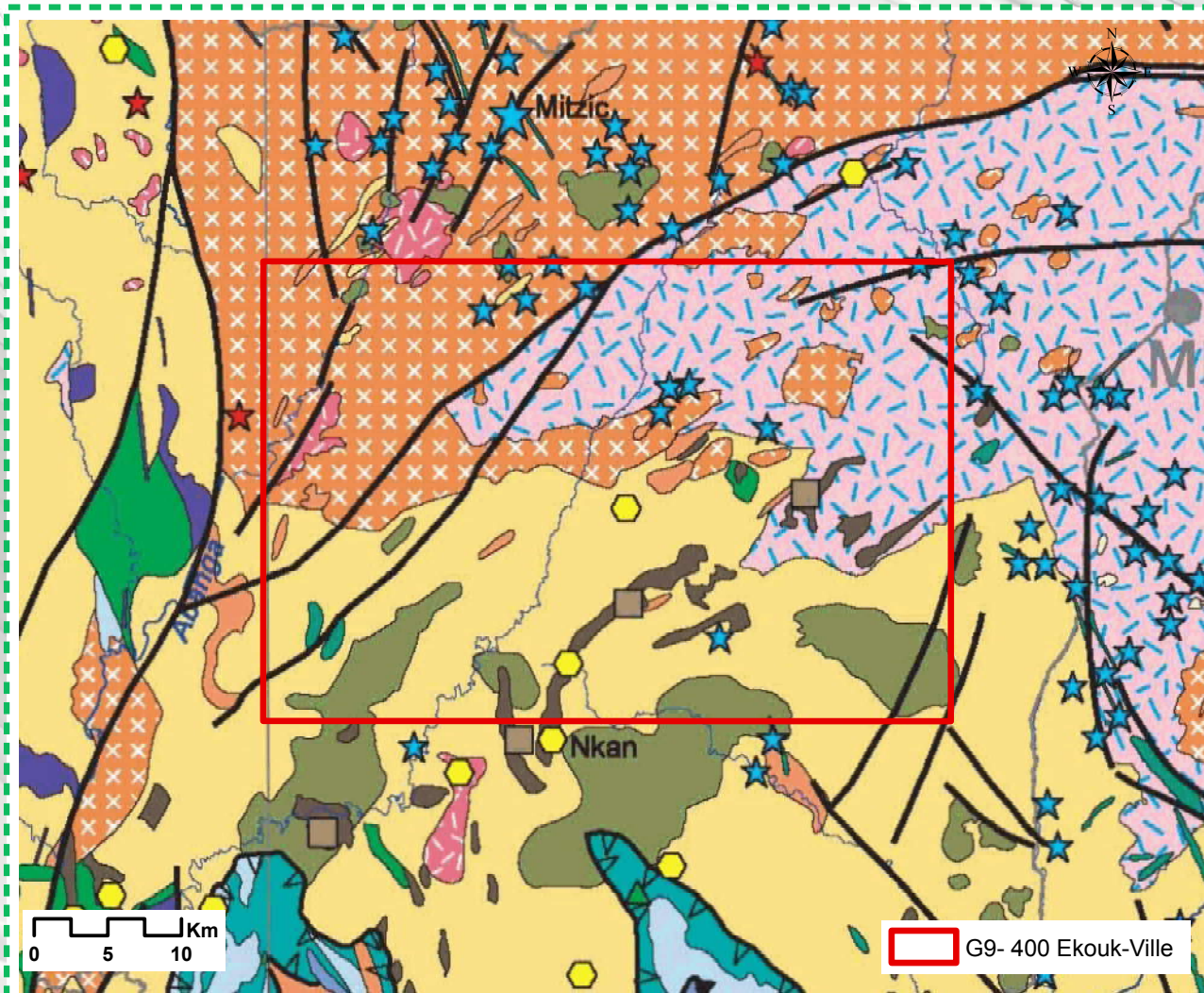
◆ G9-400 Ekouk-Ville Au

Location



◆ G9-400 Ekouk-Ville Au

Local geology



Orogène néoarchéen

Suite plutonique néoarchéenne (~ 2700 Ma)

Monzogranites porphyroïdes, syénites, granites alcalins

Monzogranites granites à biotite

Granodiorites, diorites

Domaines gneisso-migmatiques néoarchéens (~ 2750 Ma)

Orthogneiss à ± grenat, fréquemment migmatique

Gneiss dioritiques, gneiss amphiboliques

Gneiss à biotite, leptynites

Craton mésoarchéen

Domaine charnockitiques (métamorphisme HT vers ~ 2820 Ma)

Enderbites et gneiss enderbitiques, charnockites et gneiss charnockitiques, gneiss noritiques

Au
Diam
W
Cu
Fe



◆ G9-400 Ekouk-Ville Au



About the license

◆ Location:

Northern Gabon in the province of **Woleu-Ntem**, 60 km from Mitzic

◆ **Geological formations:** Establishment of a chamockitic complex (3150 Ma). Gneissification due to a first catazonal tectonometamorphic phase (3000 Ma). The relaxation of the metamorphosed building (3000 to 2950 Ma) is accompanied by the establishment of volcano-sedimentary formations (iron-bearing quartzites with amphibolite to granulite facies associated with the iron-bearing formations of Nkan, representing the terms of the Bélinga Group, having undergone the same metamorphic episode)

◆ Total area:

1458 km²

◆ Lithological surrounding:

Mafic rocks, granite, gneiss, schists, BIF

◆ Type of deposits:

Alluvial, eluvial and potential for primary gold

◆ Exploration status:

Brownfield

◆ Morphology of the primary deposit:

Crust, vein, disseminated discordant;

◆ Potential geological resources:

10 t Au

◆ Potential critical substances:

Lithium, Niobium, Titanium, Vanadium, Rare Earths, Nickel, Copper, Cobalt and Platinoids

◆ Development plan:

● 2024

Desktop studies and data compilation / Geological and structural mapping / Geochemical sampling

2025

Drilling program, pitting and trenching

2026

Resource estimation






SEM

SOCIÉTÉ ÉQUATORIALE DES MINES



 **Libreville - Gabon**

 **(+241) 11769100**

 **info@gabonmining.com**

 **www.gabonmining.com**